

Listed Building Application Elements (rev a)

Prince Rupert Hotel,  
Butcher Row, Shrewsbury

SY1 1UQ

July 2012



## Content

Introduction to proposed works	3
Site location	4
Garden courtyard / new entrance doorway	5 - 9
Rooms 206 and 207 remodelling	10 - 18
Room 304 roof terrace	19 - 25





### Introduction to proposed works

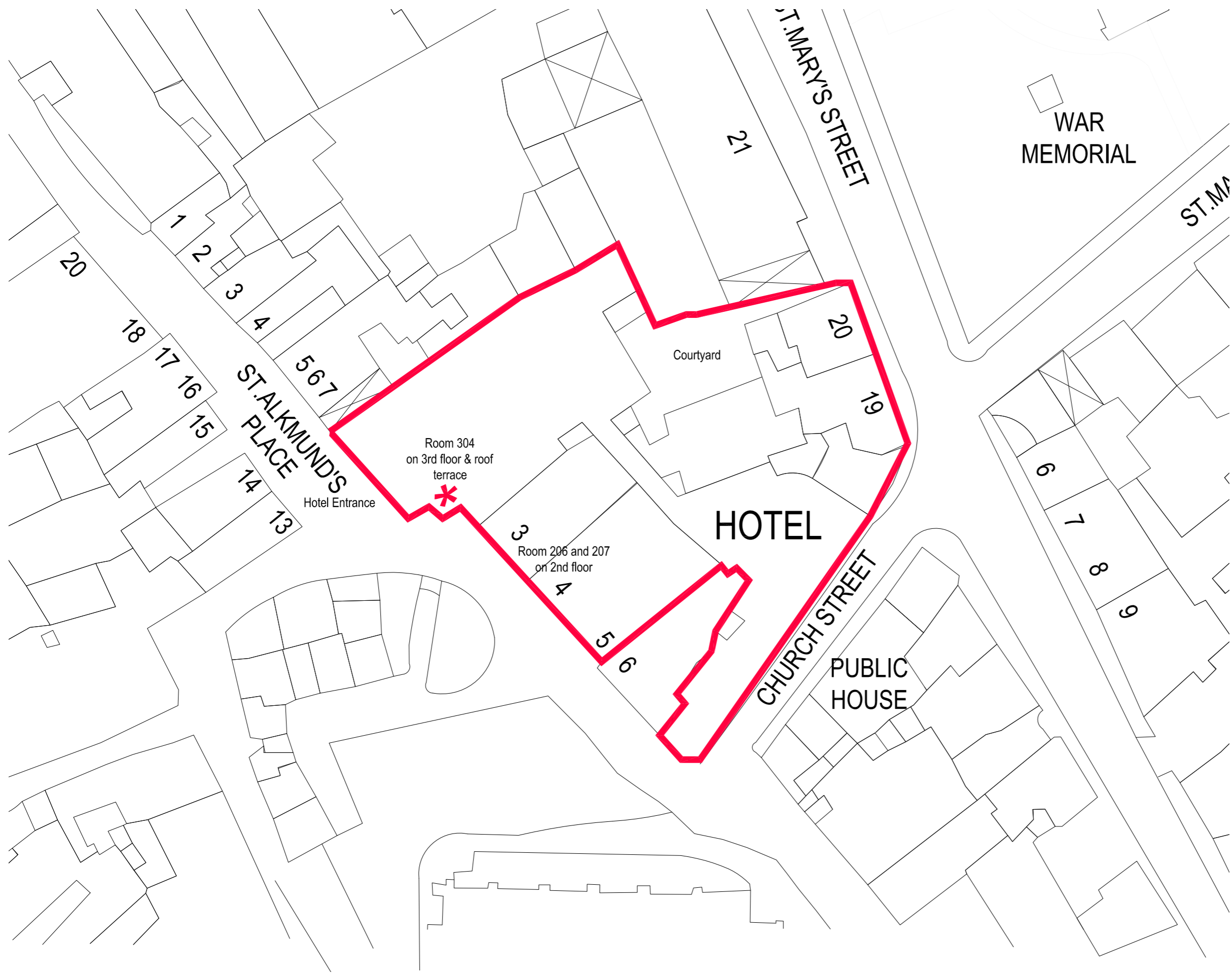
It is proposed that a range of minor interventions take place to the Prince Rupert Hotel in order to dramatically improve and celebrate key spaces and historical character of the buildings.

The works as follows.....

Garden courtyard /new entrance doorway

Rooms 206 and 207 remodelling with new roof lights to rear

Room 304 roof terrace with amended window and safety handrail



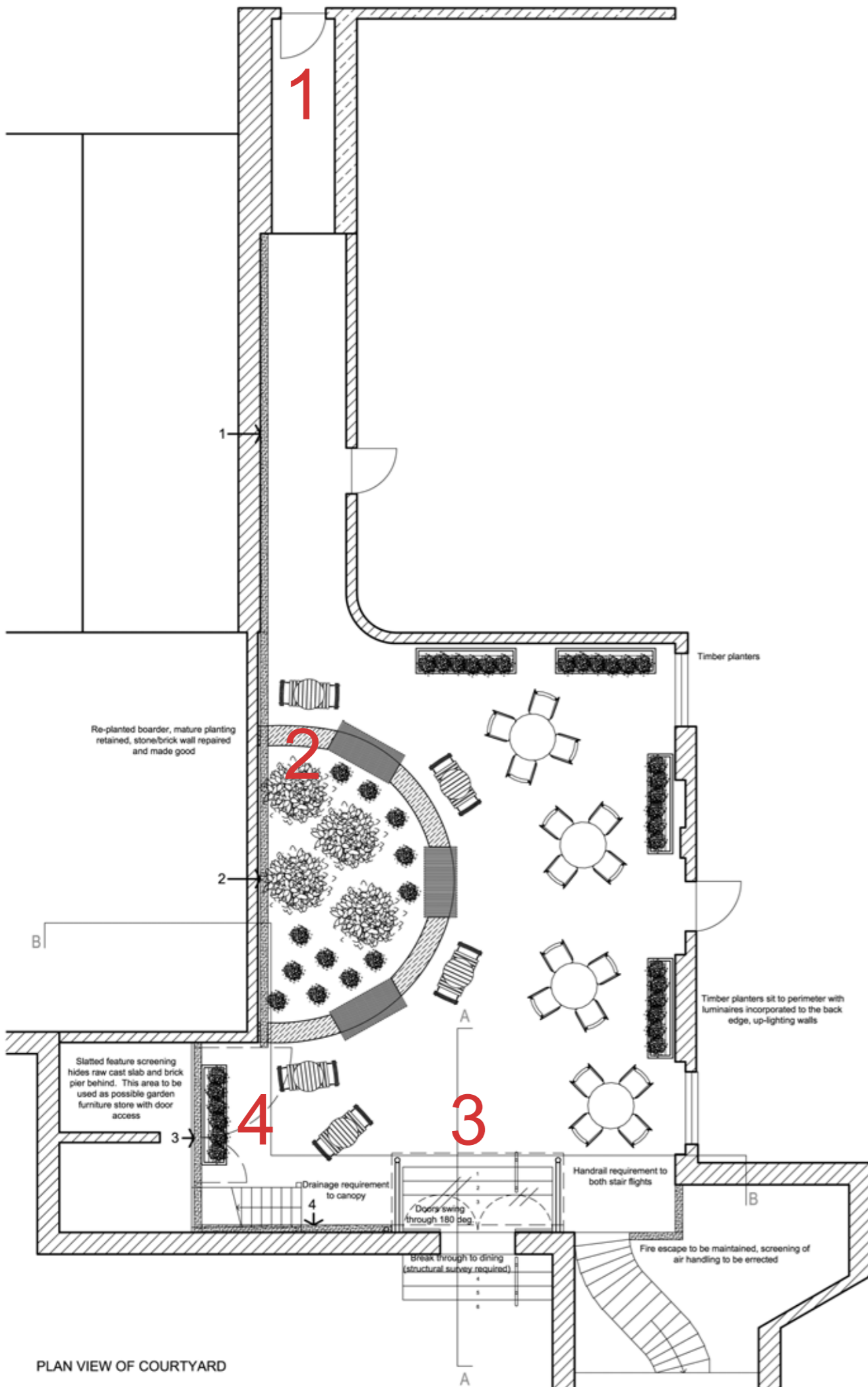
Site location 1 : 500

**Key**

- site boundary
- \* terrace location

Garden courtyard / new entrance doorway





PLAN VIEW OF COURTYARD

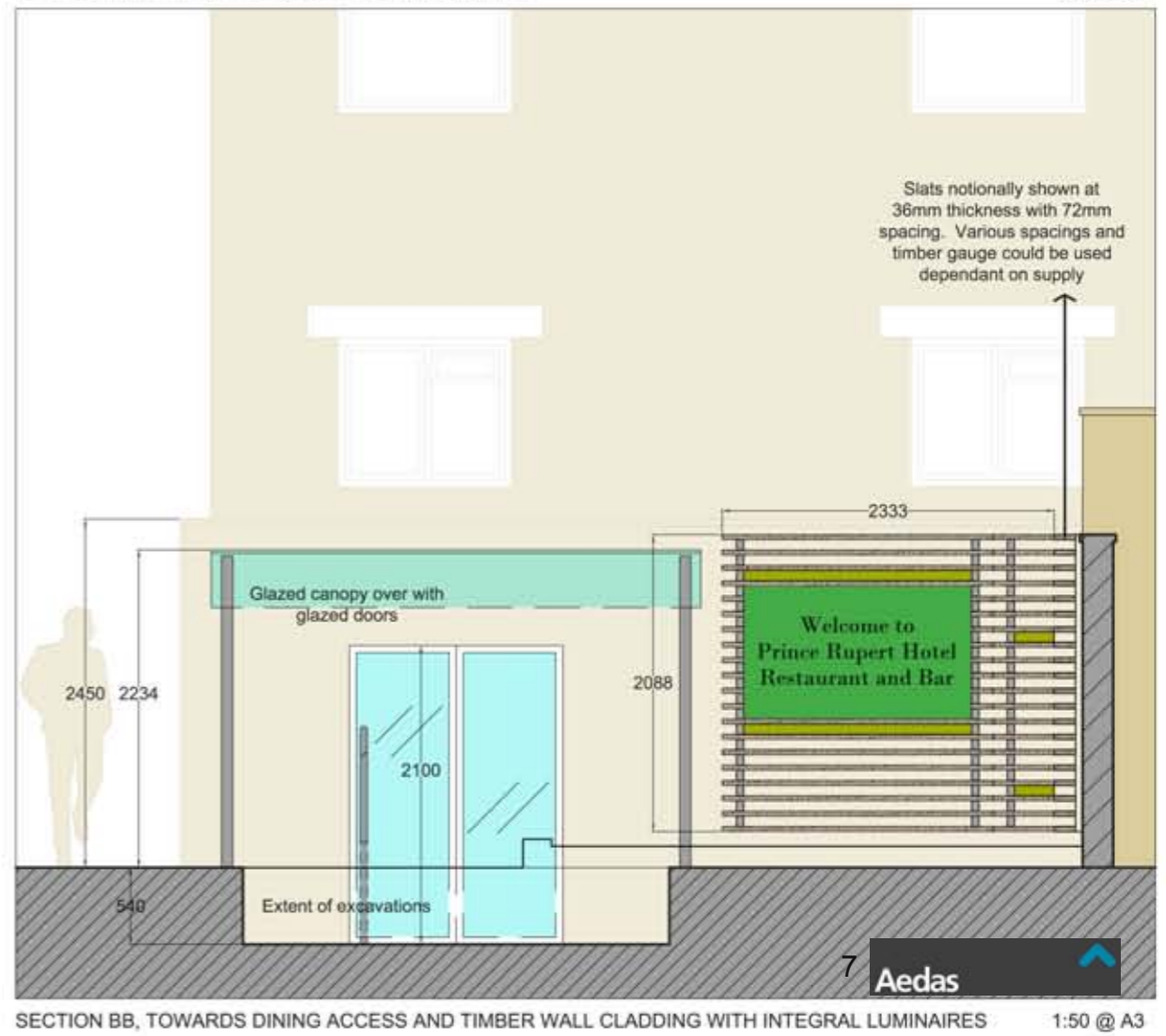
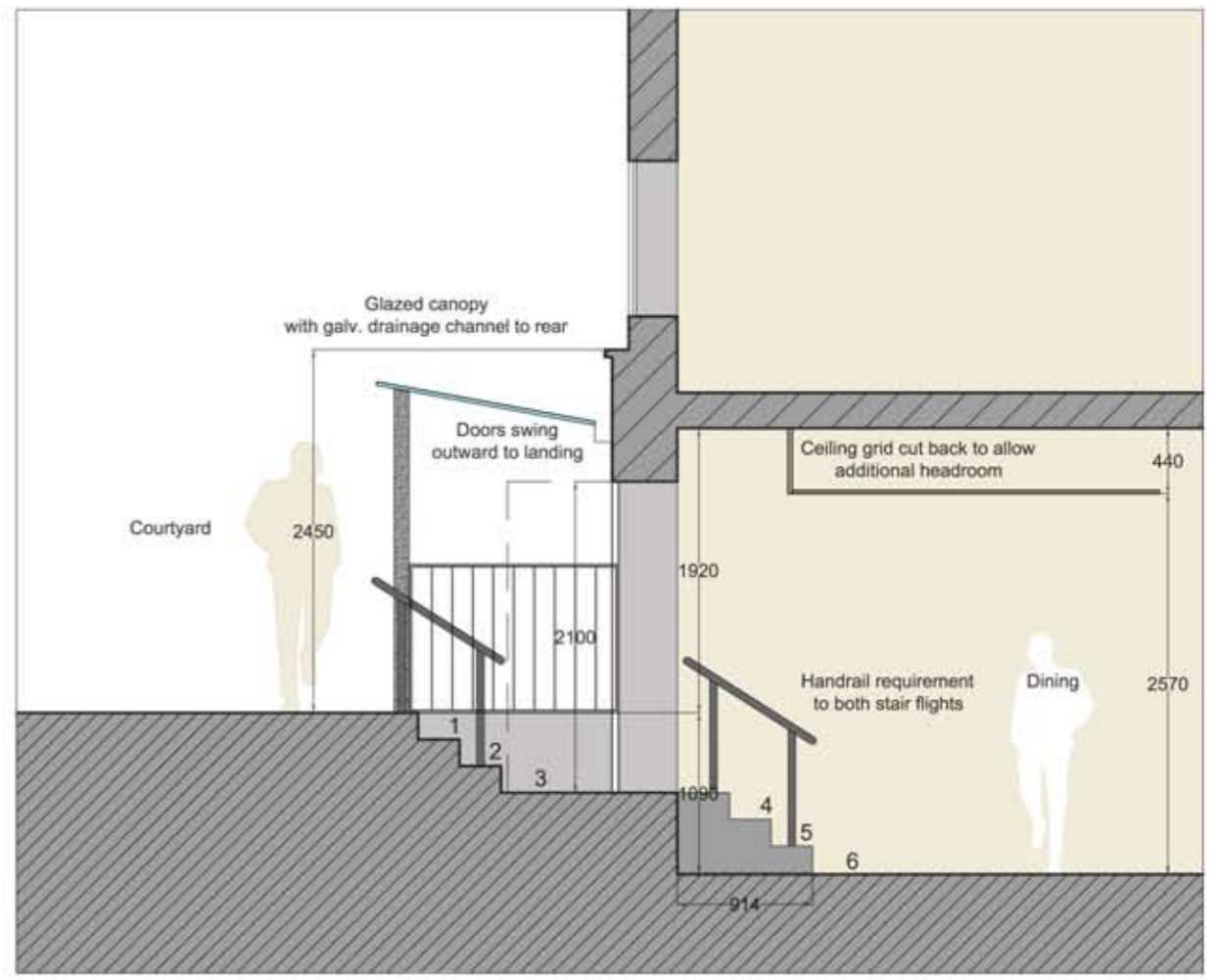
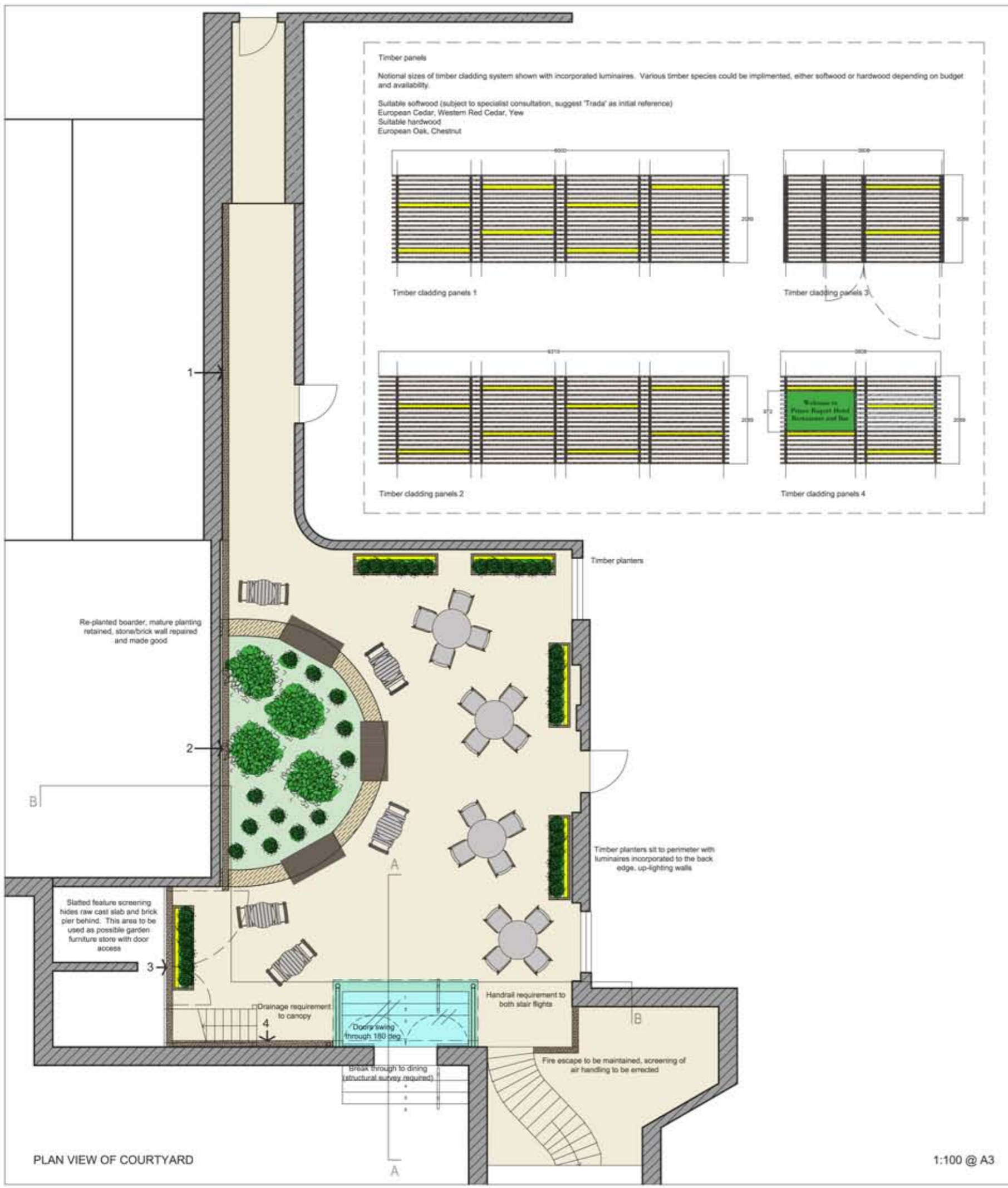
1:100 @ A3

## Proposal for courtyard space

It is proposed that the courtyard space is made usable and made a key feature for the hotel and guests.

The key elements that will make this a success are :

1. Allowing **access from St Marys Street**, this will allow passers by a visual link into the courtyard and second entrance into the hotel.
2. Reforming and tidying the **semi-circular planter** with seating to the perimeter. This is one of the first things guests will see so this is a vital element and first impression of the Prince Rupert Hotel.
3. Allowing **access from courtyard to dining room** via new steps and glazed canopy. Striking feature and necessity for the serving of drinks and snacks to guests.
4. Introducing **planter boxes with up lighting** and dynamic **timber clad walls**. This is an important element, planned to soften the space, introduce colour and drama through illumination and slatted timbers that create movement in the space, drawing attention away from a more utilitarian palette of surrounding buildings.

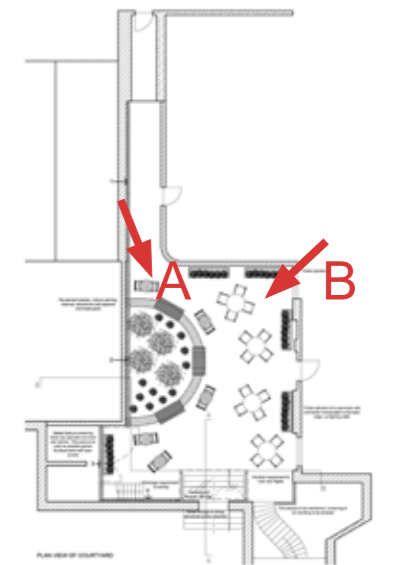




**A** View upon entering courtyard, re-planted boarder can be seen with perimeter seating and new access to hotel in background.



**B** View showing perimeter timber slatting running around courtyard in key areas with planter boxes to left with integrated up-lighting.



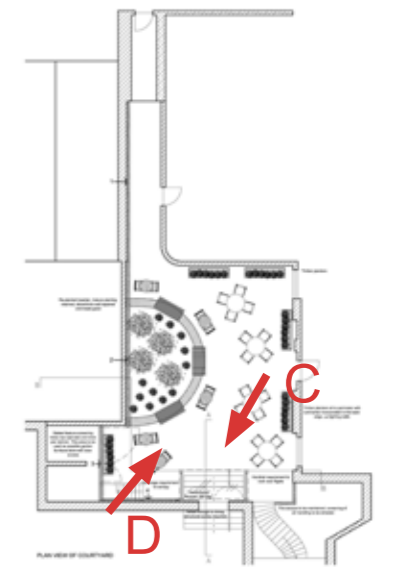




**C** View towards new access to dining and kitchen space with illuminated hotel signage to right of doors.

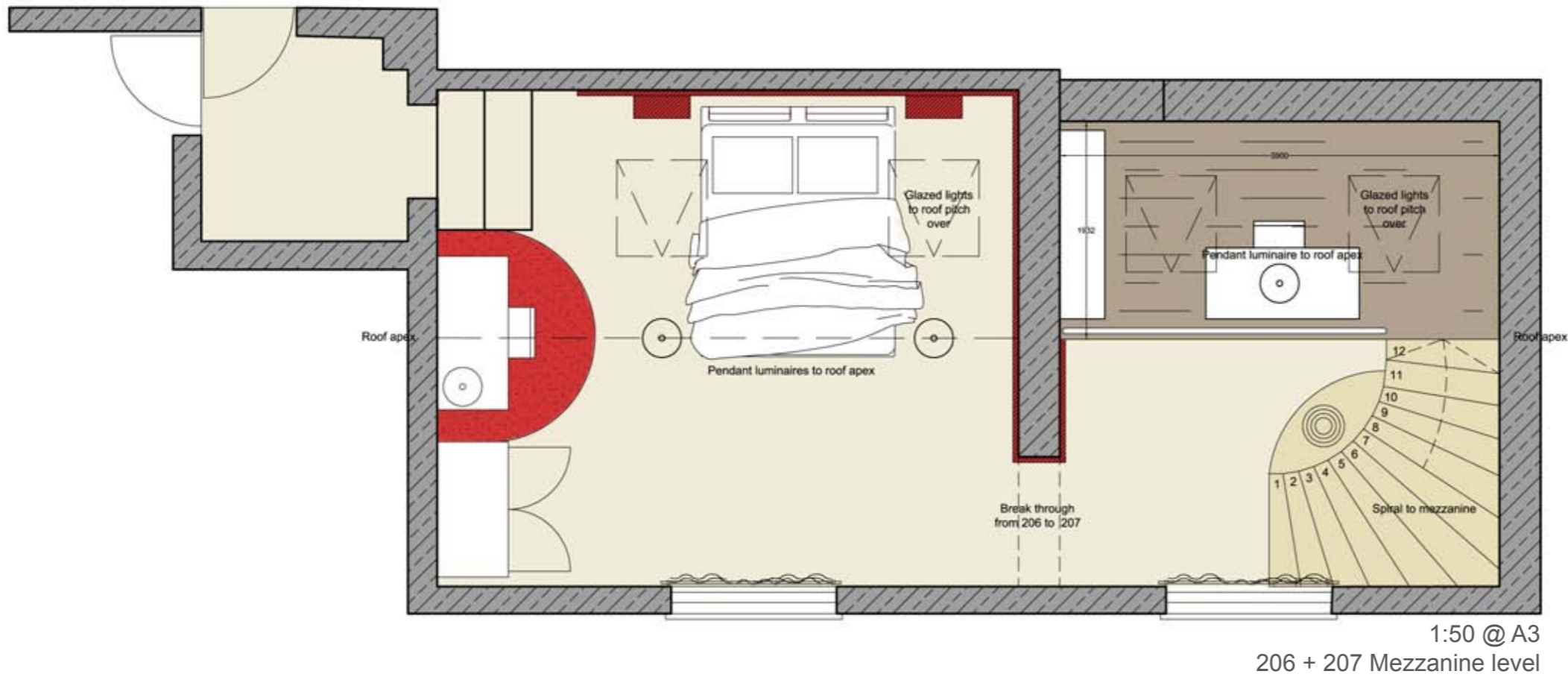


**D** View looking into courtyard with re-lime washed / painted walls and feature up lighting within planter boxes.



Rooms 206 and 207 remodelling





### Proposal for bedrooms 206 and 207

It is proposed that 206 and 207 be made into a master suite by breaking through dividing wall. This would allow for creation of entertainment suite and bedroom as two separate spaces.

The **entertainment suite** would have an upper mezzanine space for writing and reading with small library provision.

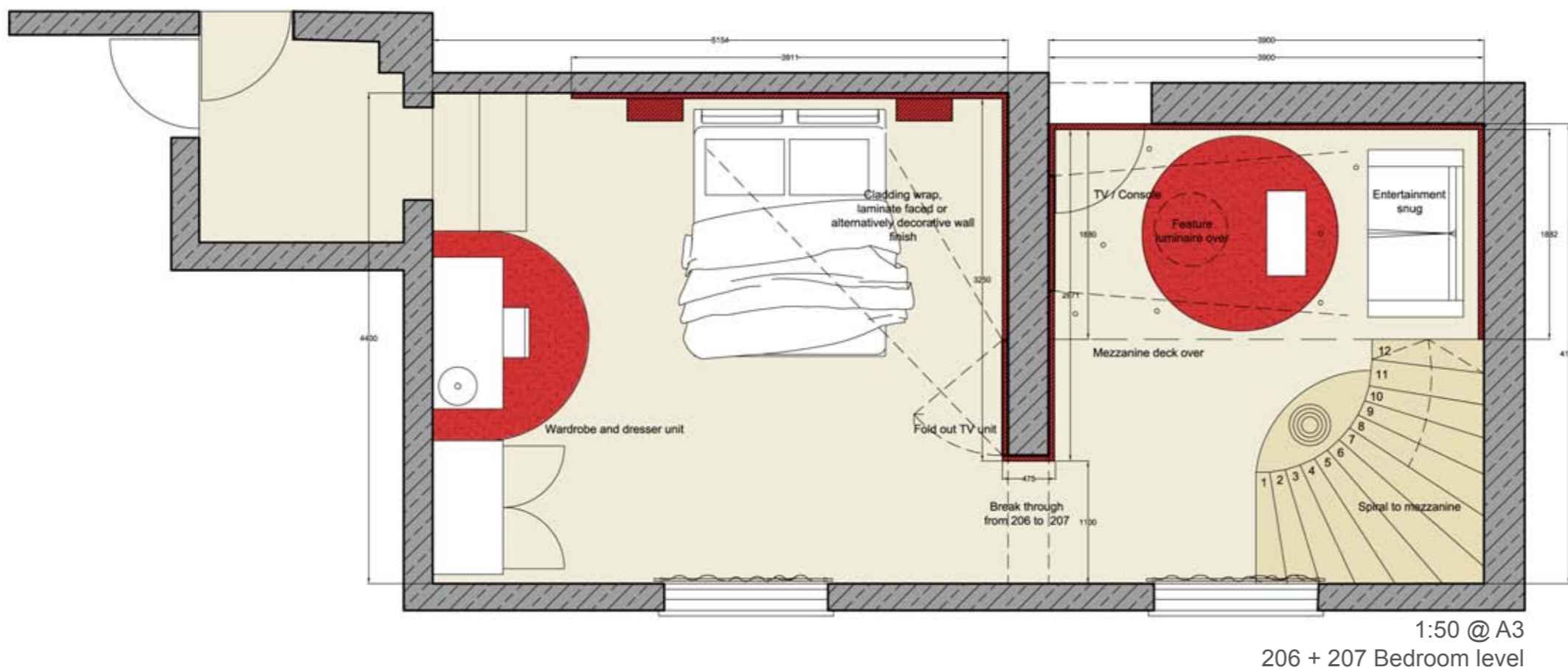
The lower area would incorporate the required spiral stair access and entertainment hub with feature lighting and games provision.

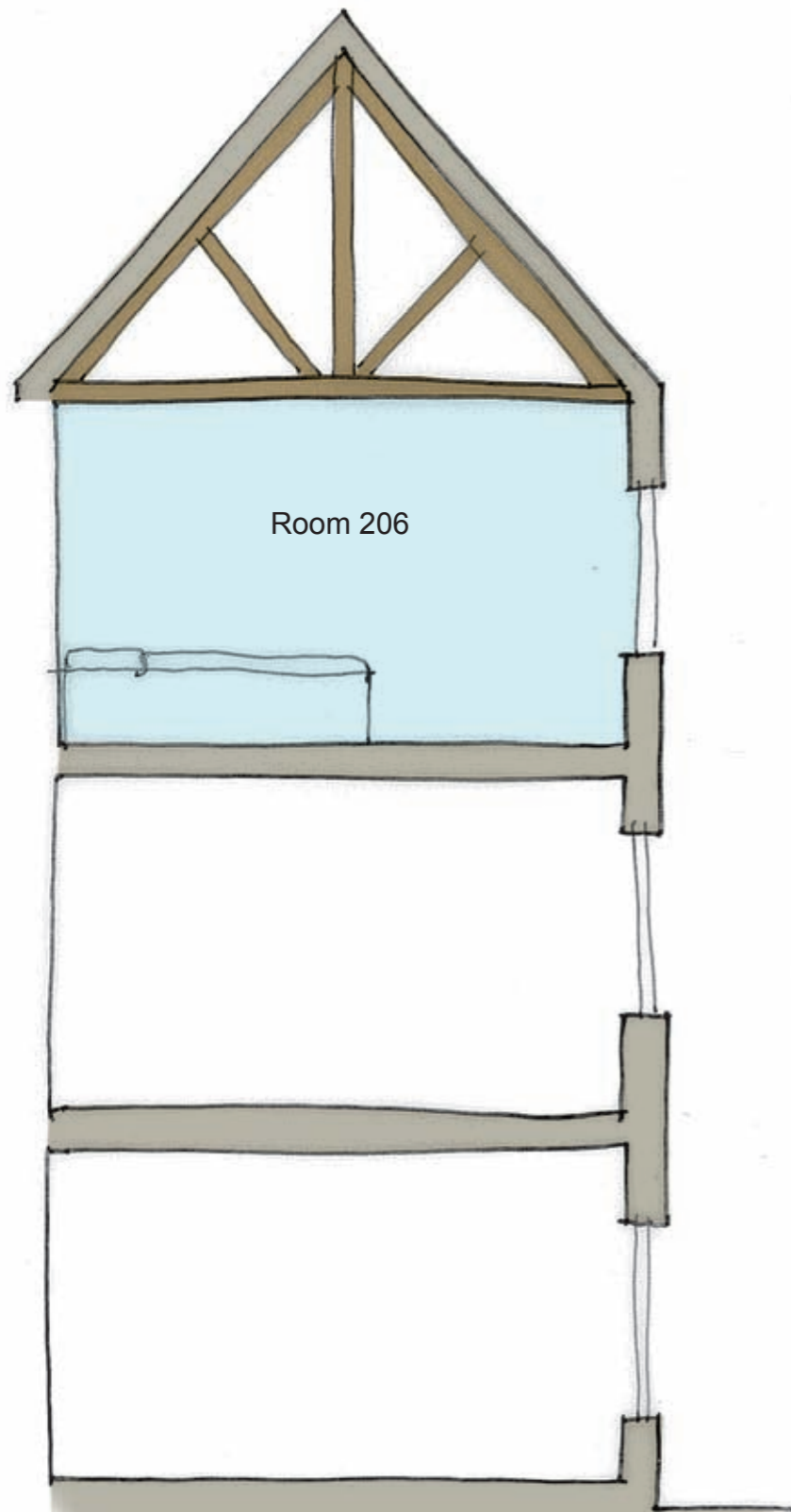
The **bedroom space** would incorporate wrapping feature wall with either laminate finish, veneer or more simply, a wallpaper finish to link the two spaces together.

A dressing table with mirror, luminaire over and wardrobe facility would compliment the space.

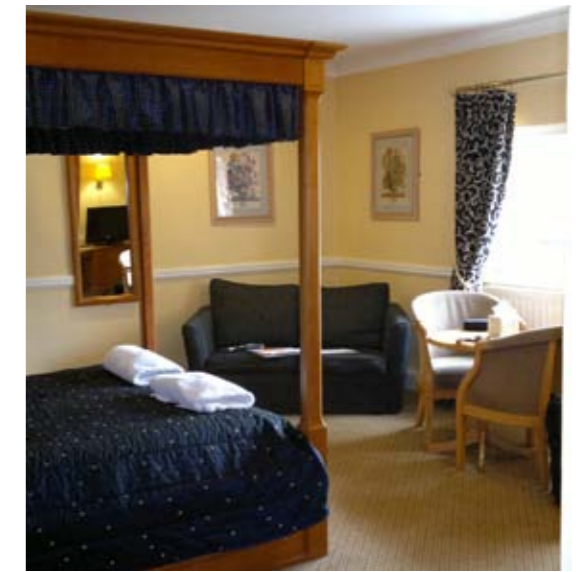
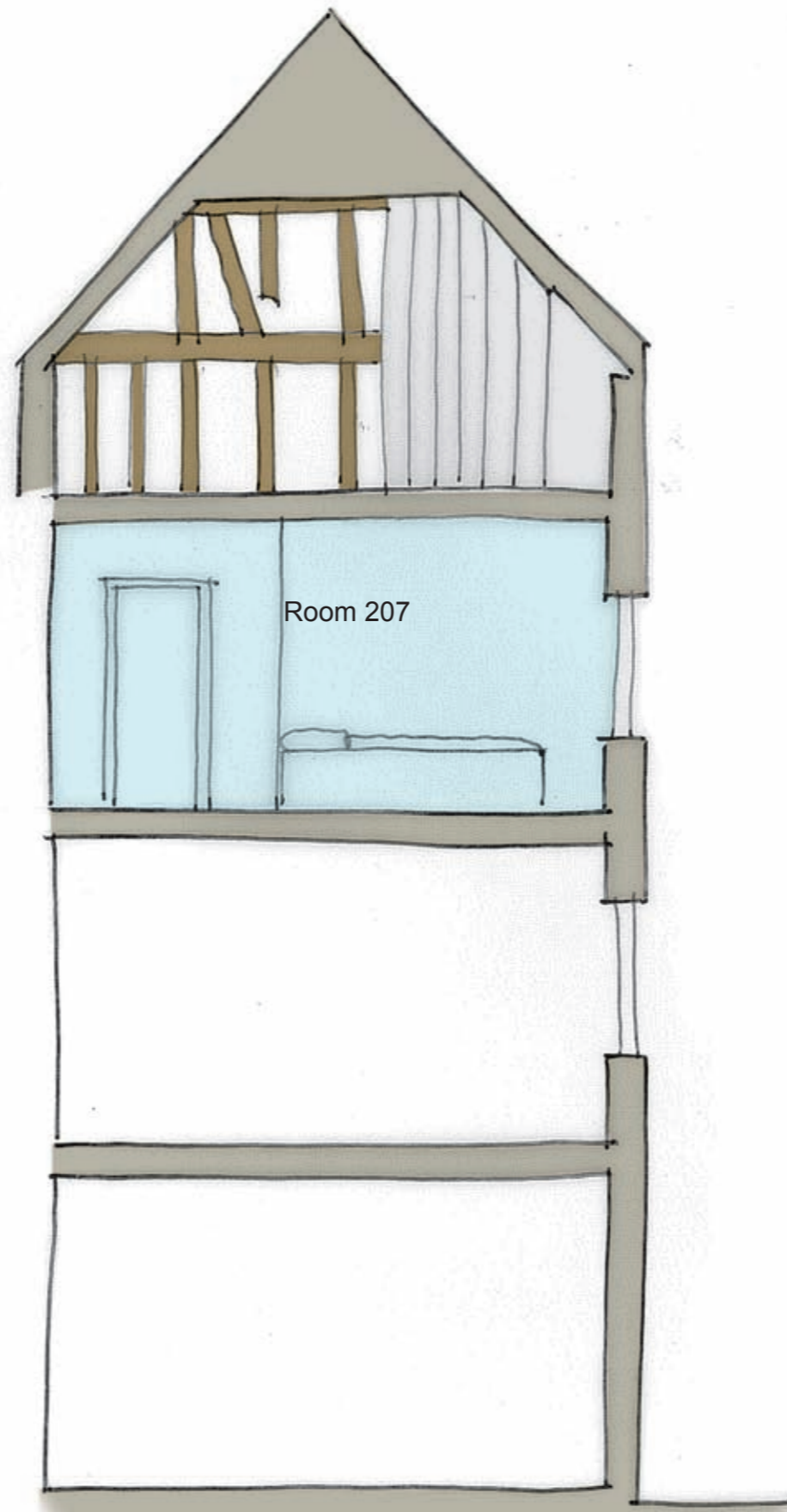
Above the bedroom space, it is proposed the existing ceiling is removed and tunable feature lighting installed to perimeter in order to wash the sloping soffit.

Finally it is proposed that both 206 and 207 have glazed lights introduced into the roof plane to improve day lighting into each room.

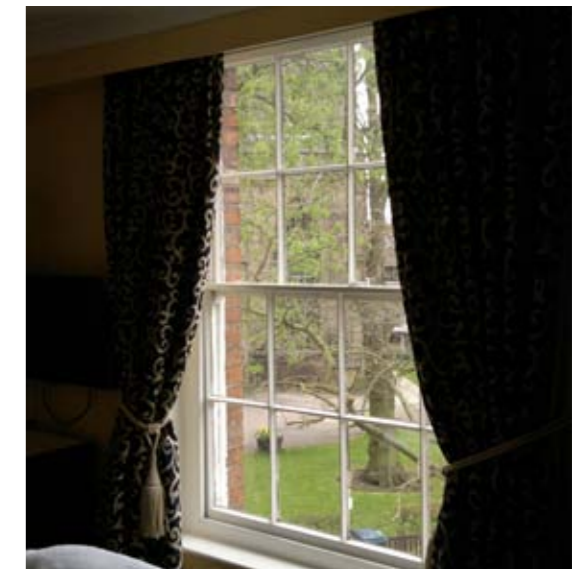




Existing room configuration, ceilings average 2.3 m



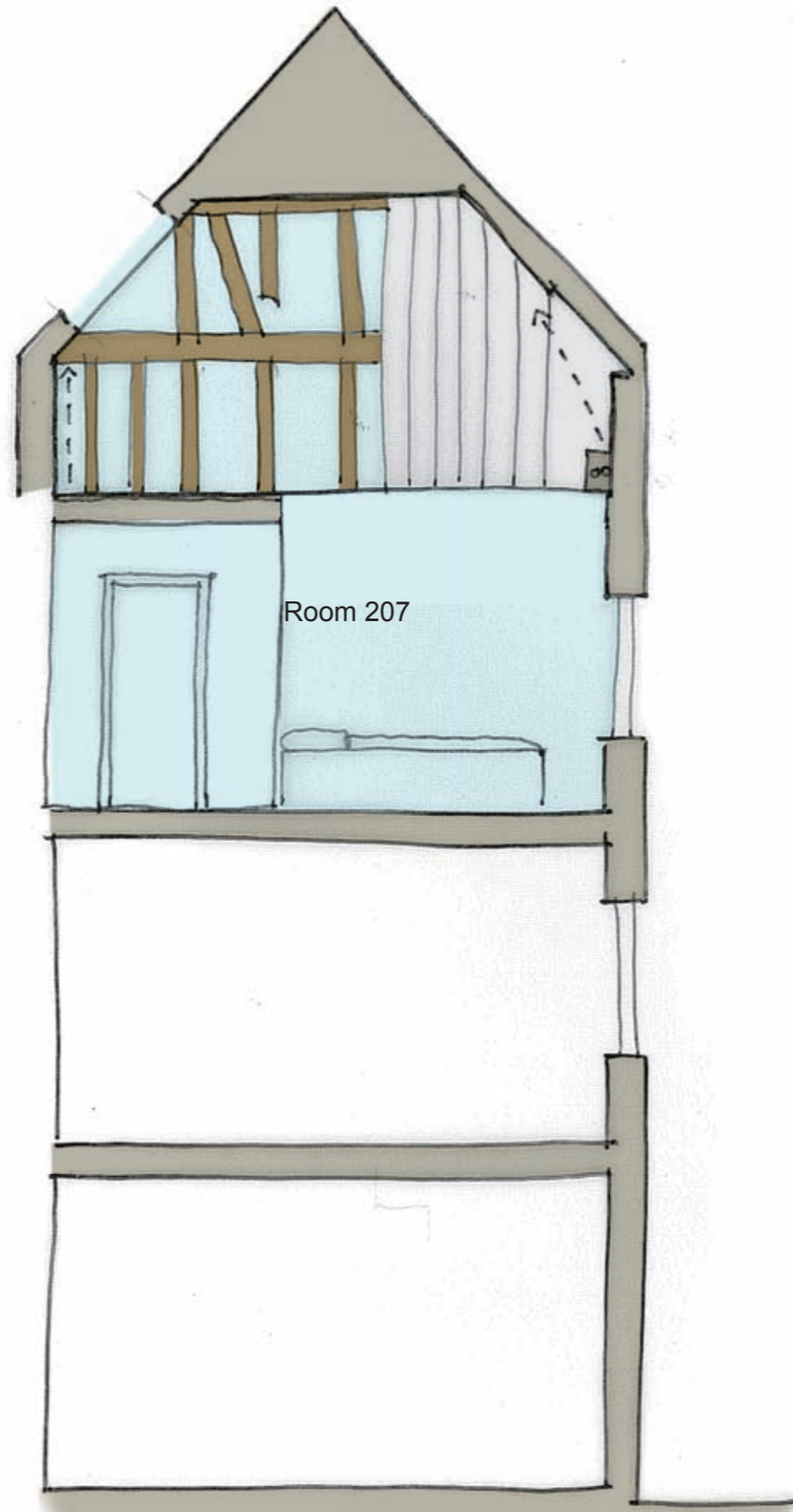
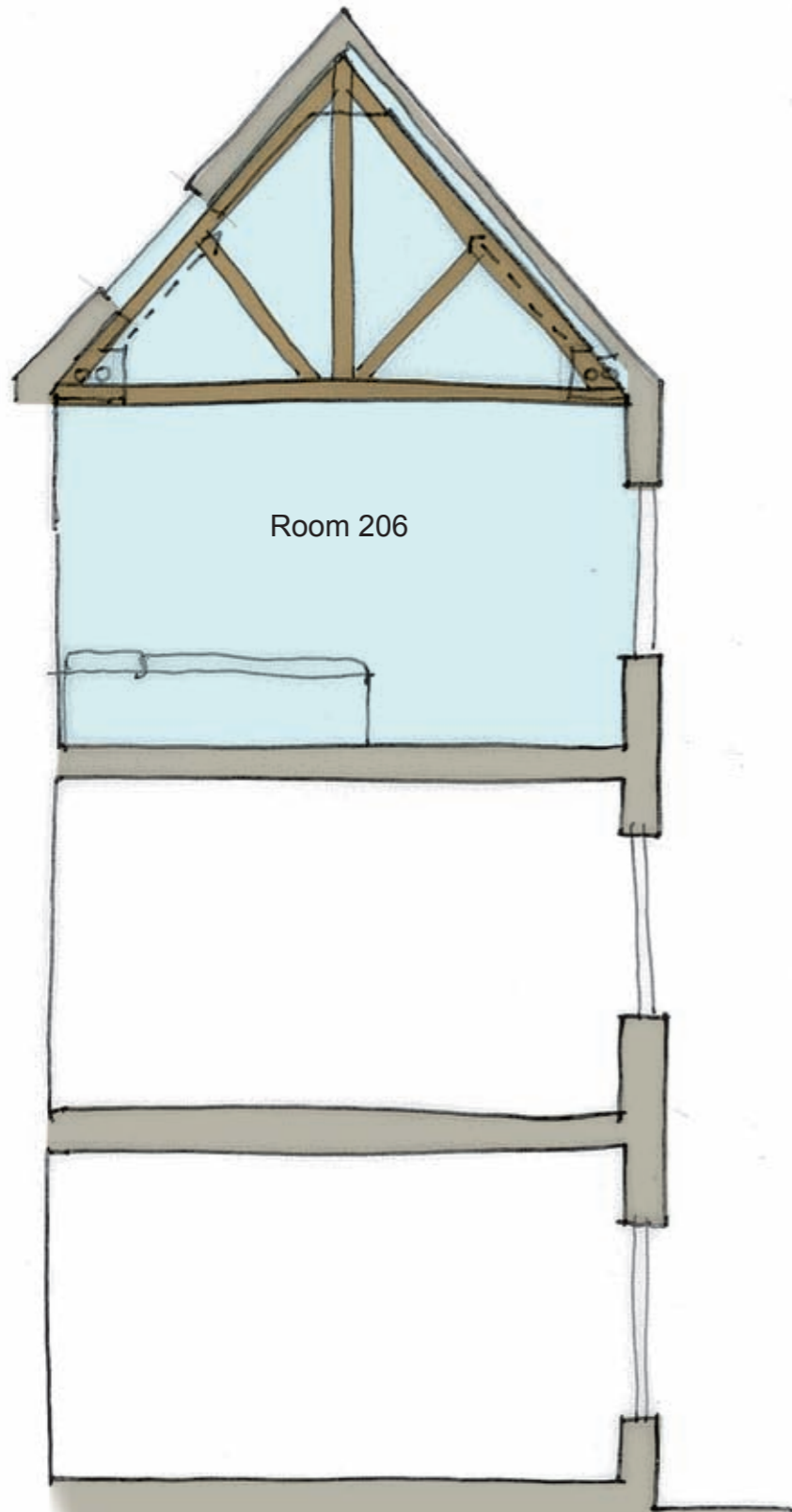
Current spacious configuration of 206



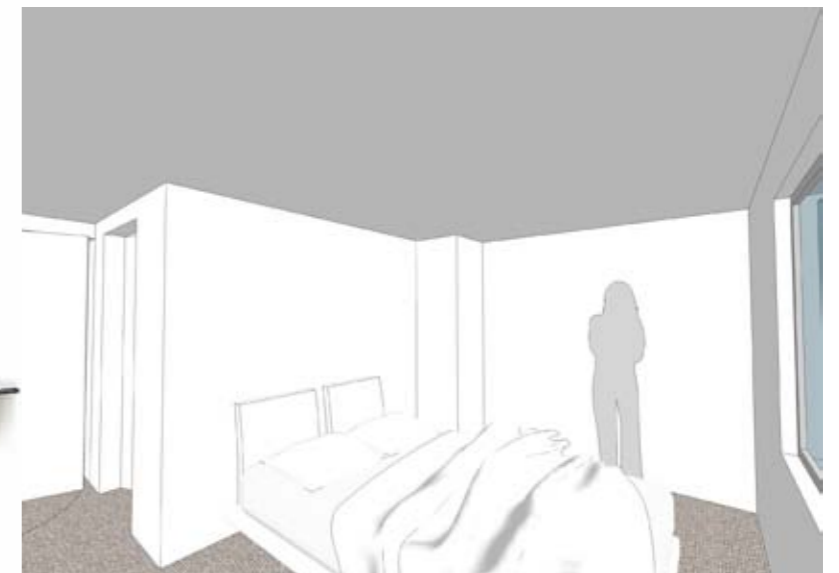
Commanding views of church in 207



Although scruffy, significant loft features above 207



Existing 206



Existing 207

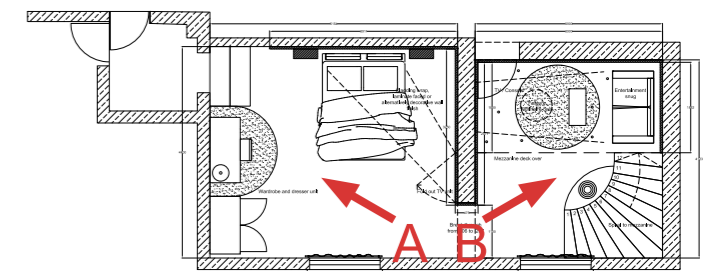
Proposed removal of ceiling to expose timbers and create more dramatic spaces



**A** 206. Bedroom re-configured with double height space and glazed lights with wrapping wall that runs from 206 to 207



**B** 206 - 207 New entrance made from 206 to 207 through dividing wall. Spiral stair sweeps up to mezzanine in background and snug below

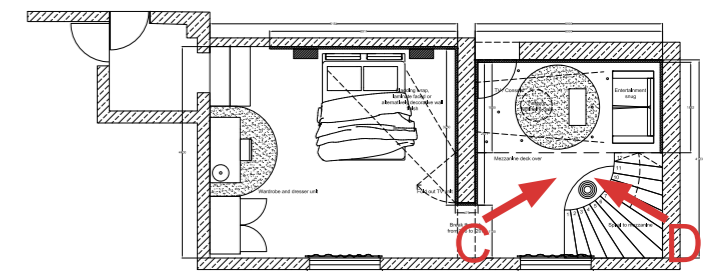


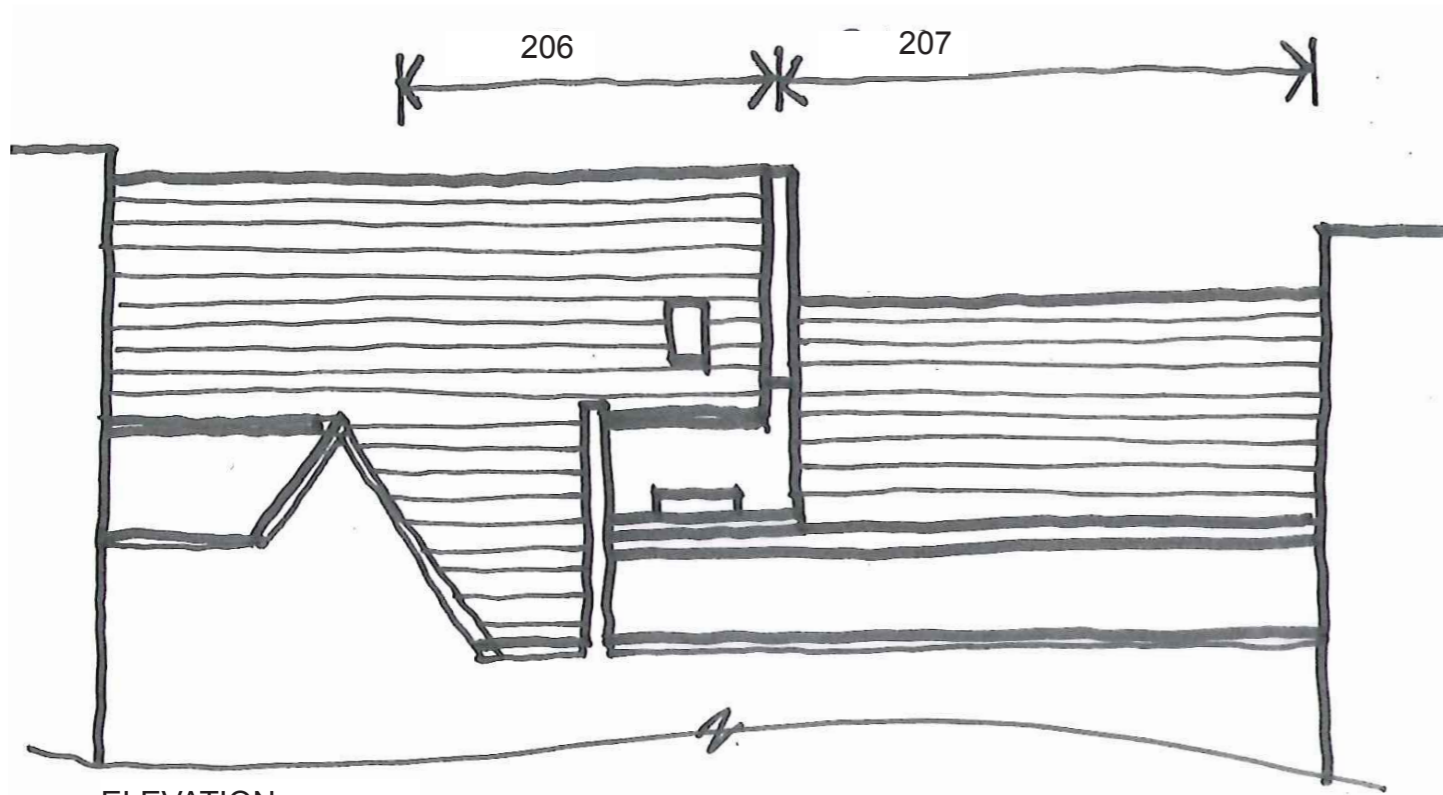


**C** 207. Snug below mezzanine incorporates media facilities and feature luminaires. Door maintained to corridor for emergency access.

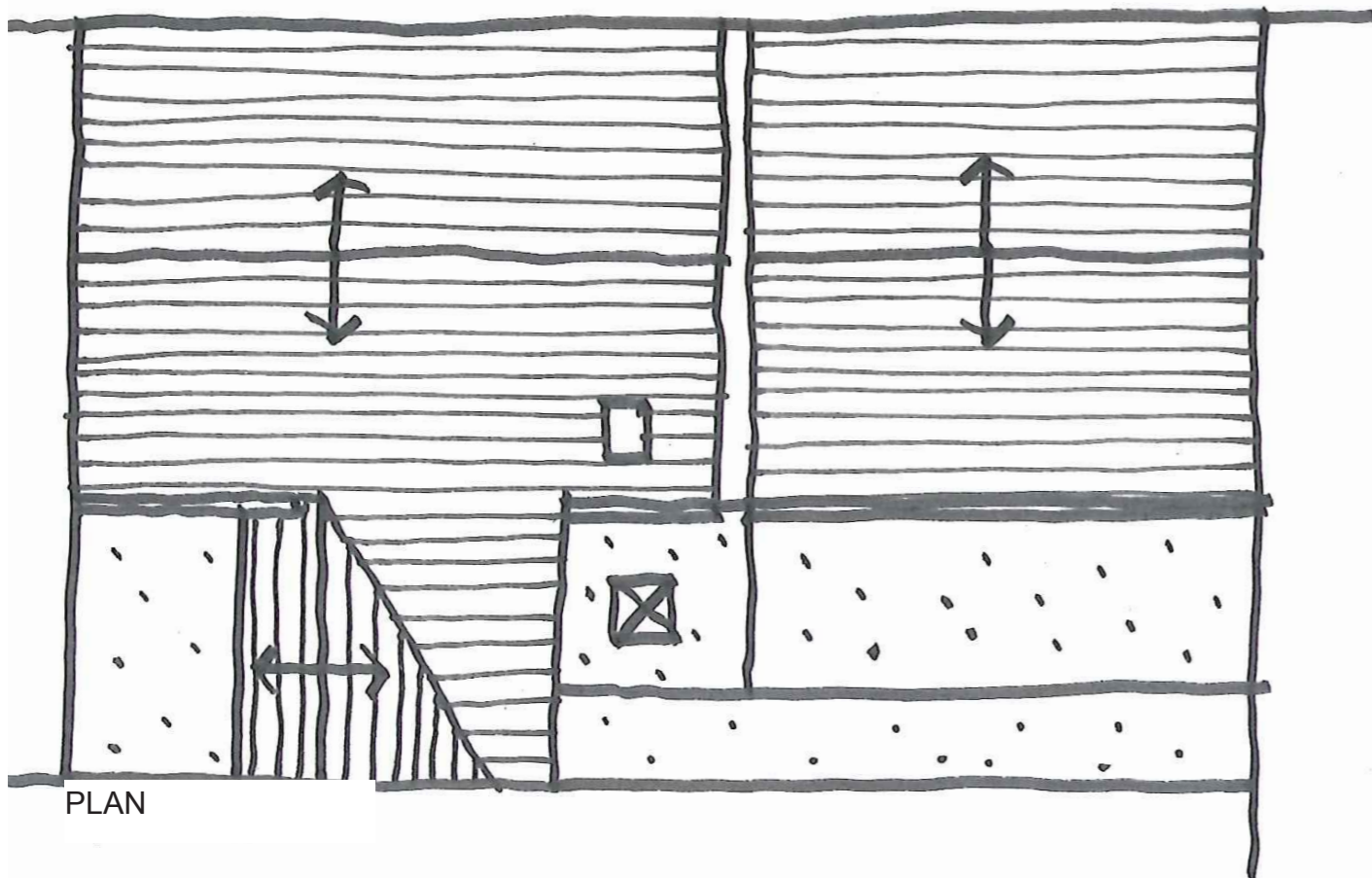


**D** 207. Writing desk on mezzanine level with small bookcase and glazed lights. Original timbers retained and renovated.





ELEVATION



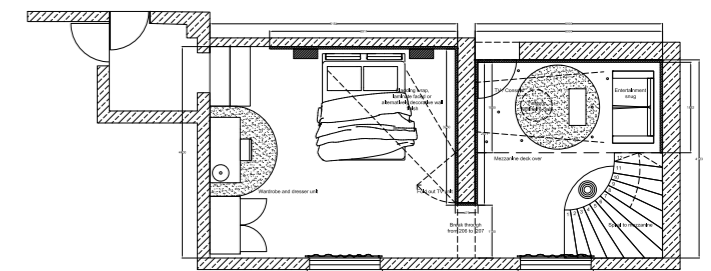
PLAN

Notes, existing materials :

Roof : Plain clay tiles

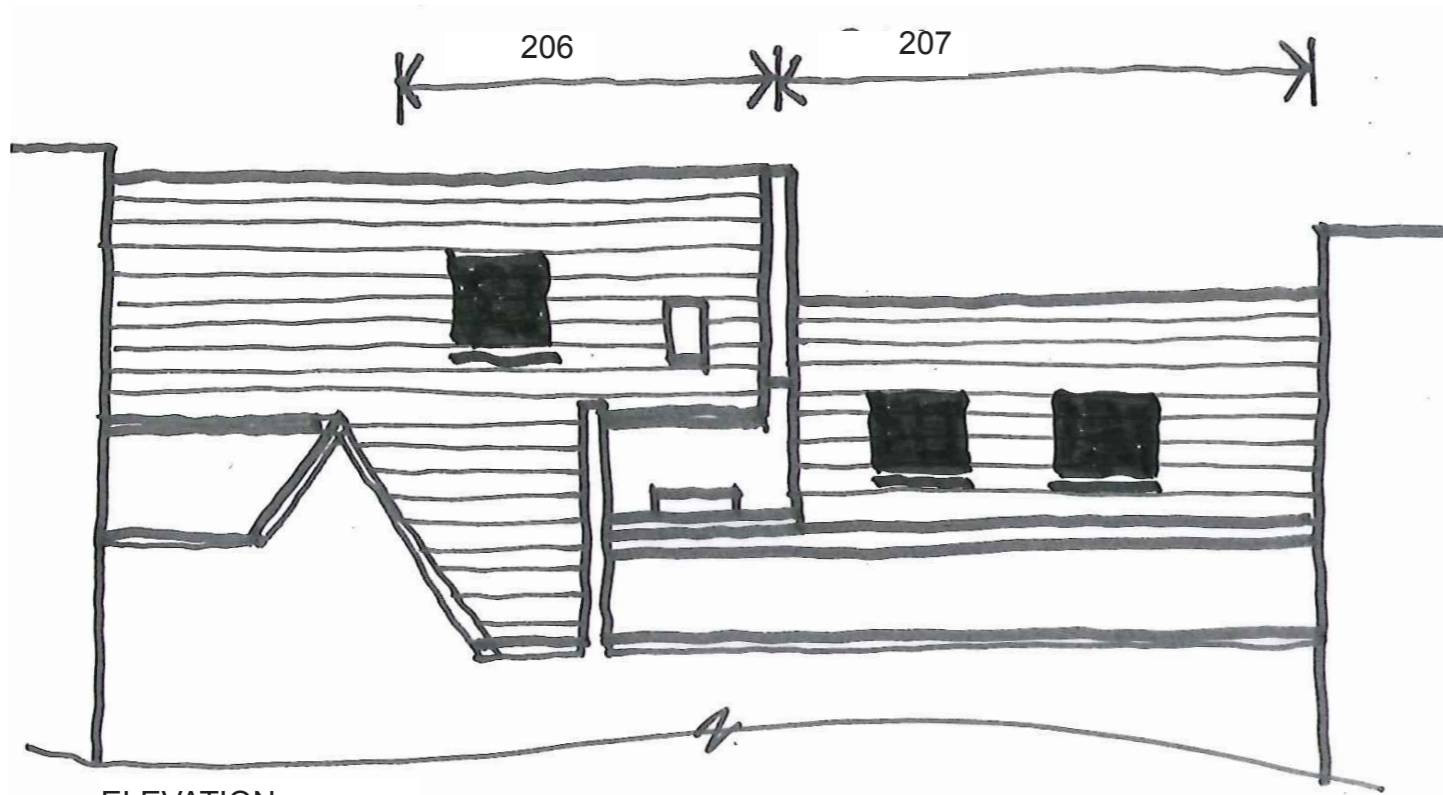
Walls : Brickwork

Lower Roof : Felt

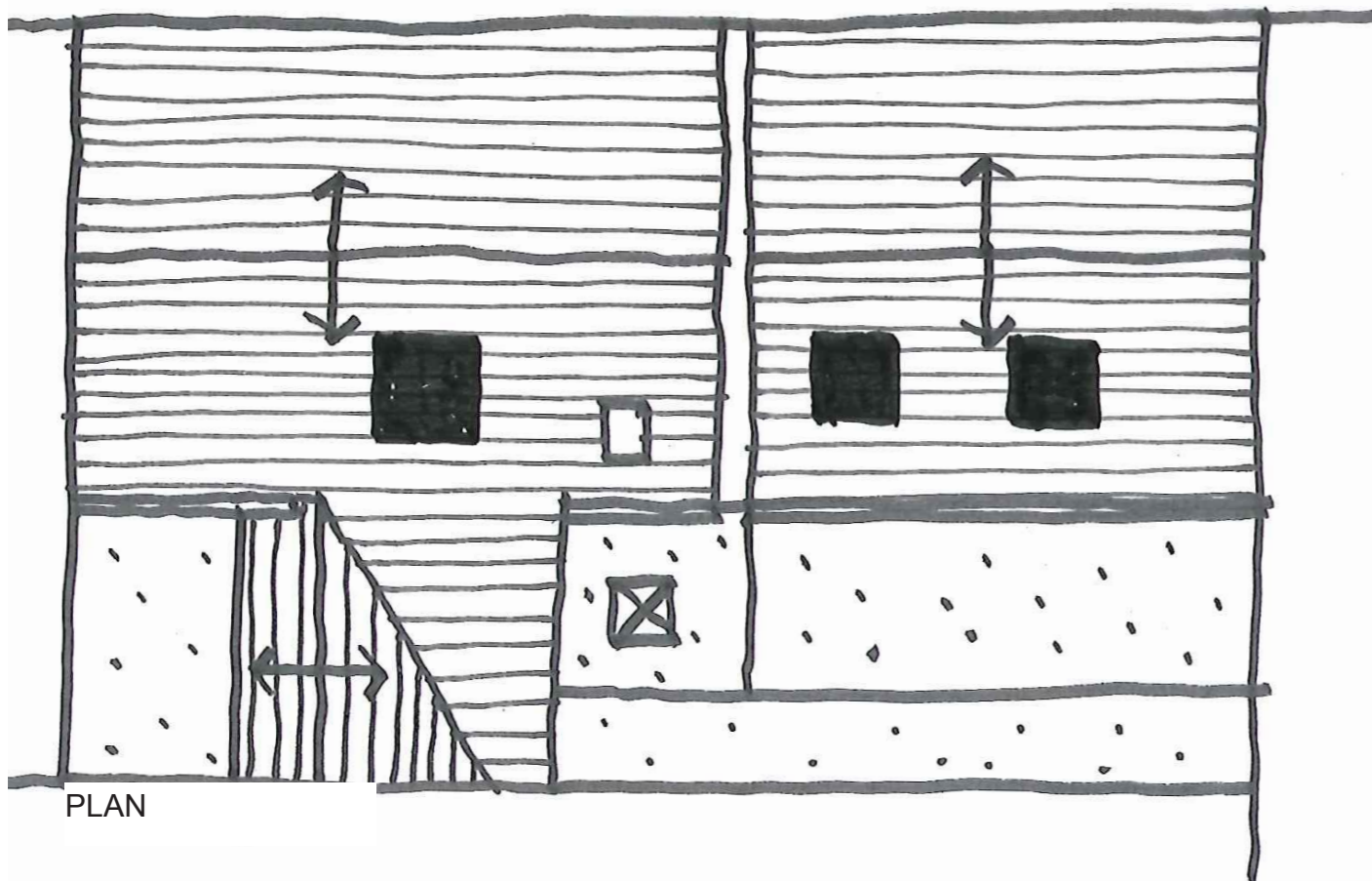


Room 206 / 207 Existing plan / elevation





ELEVATION

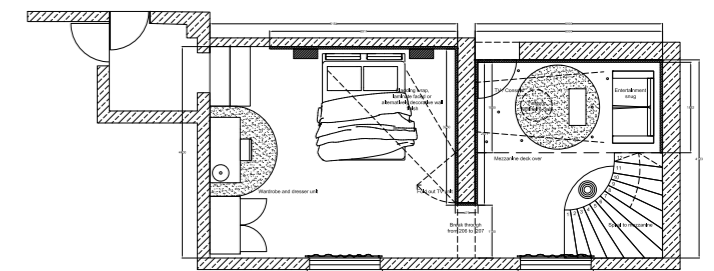


PLAN

Notes, proposed materials :

Roof light :

Conservation type, black frame  
 Size to be determined to fit between  
 existing rafters, approx, 750 x 750 mm



Room 206 / 207 Proposed plan / elevation

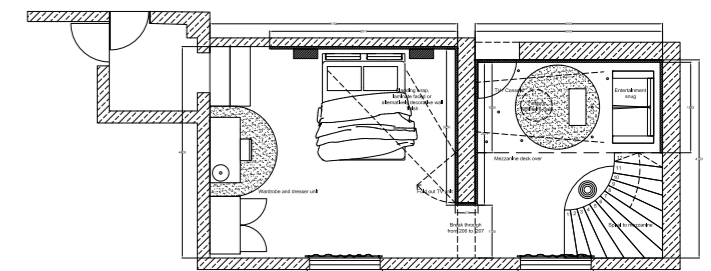


Search...



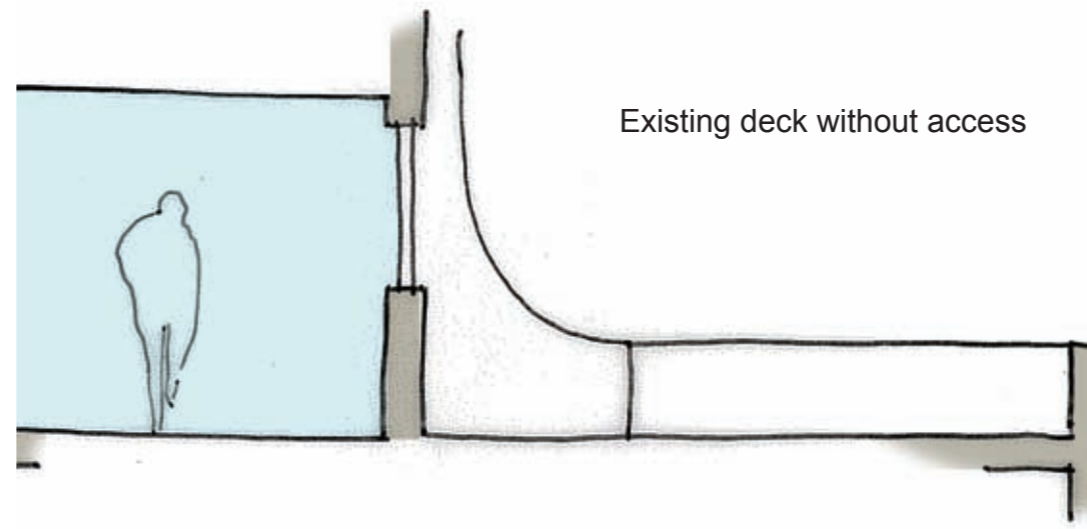
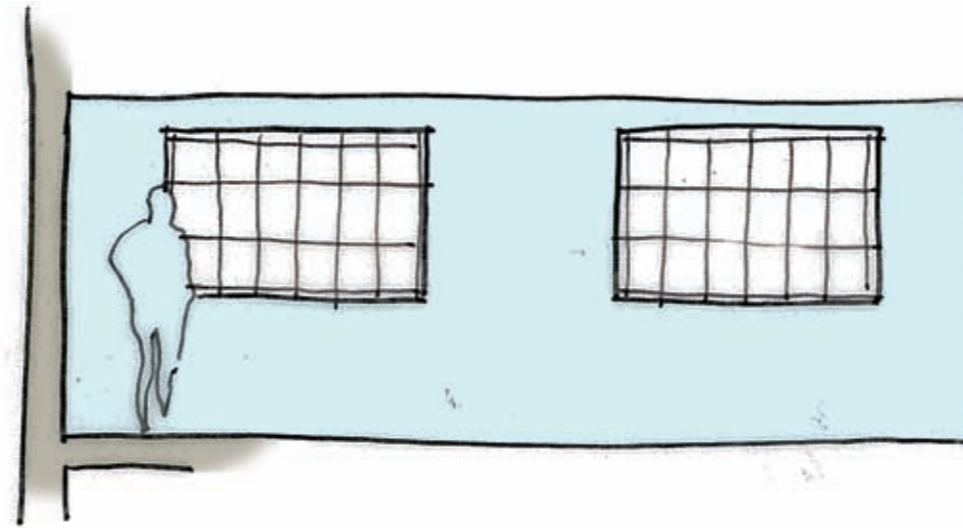
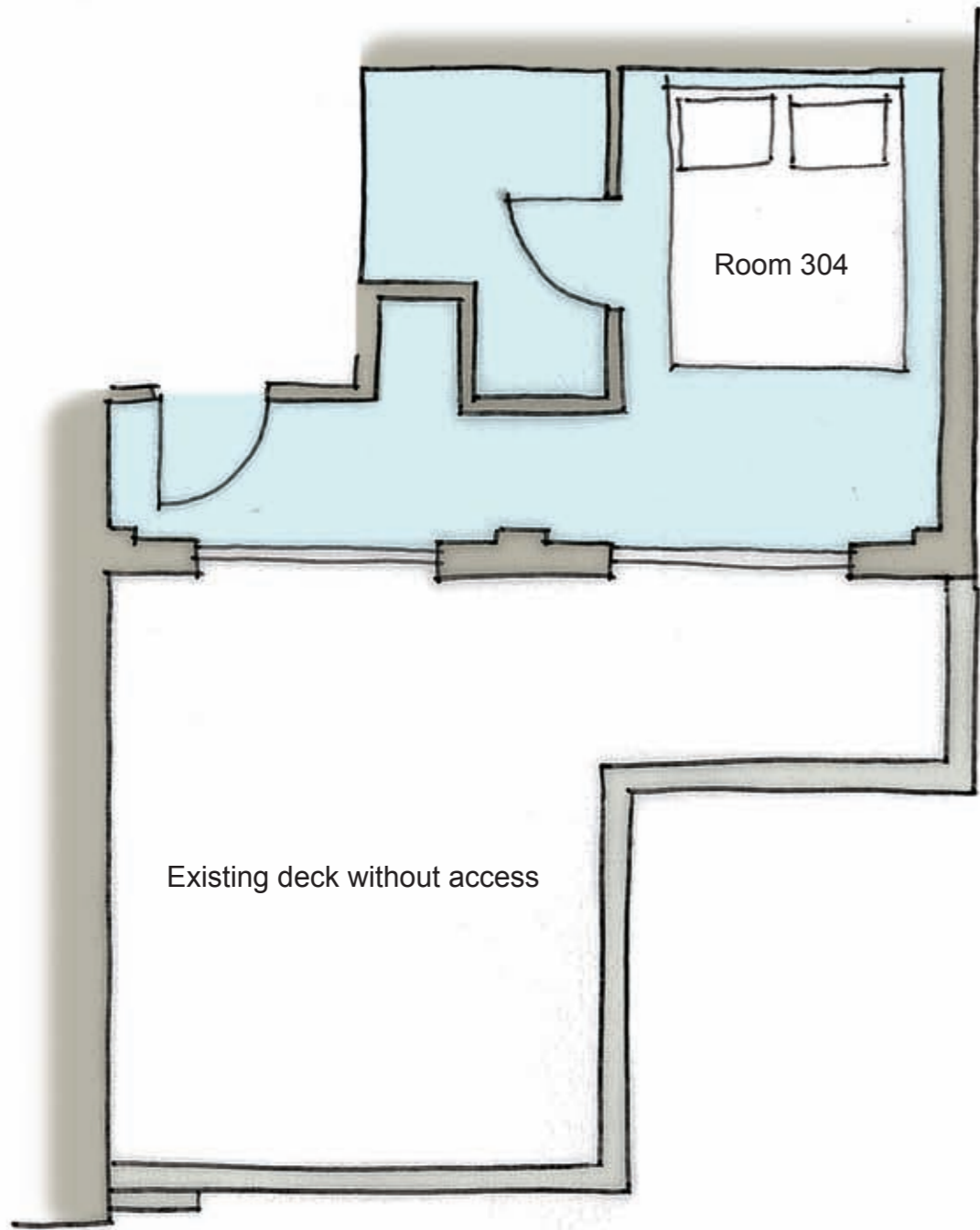
## Product Range

- [All Products](#)
  - [the Conservation Rooflight](#)
    - [Conservation Sizes & Prices](#)



Room 304 roof terrace





Excellent views of church and grounds

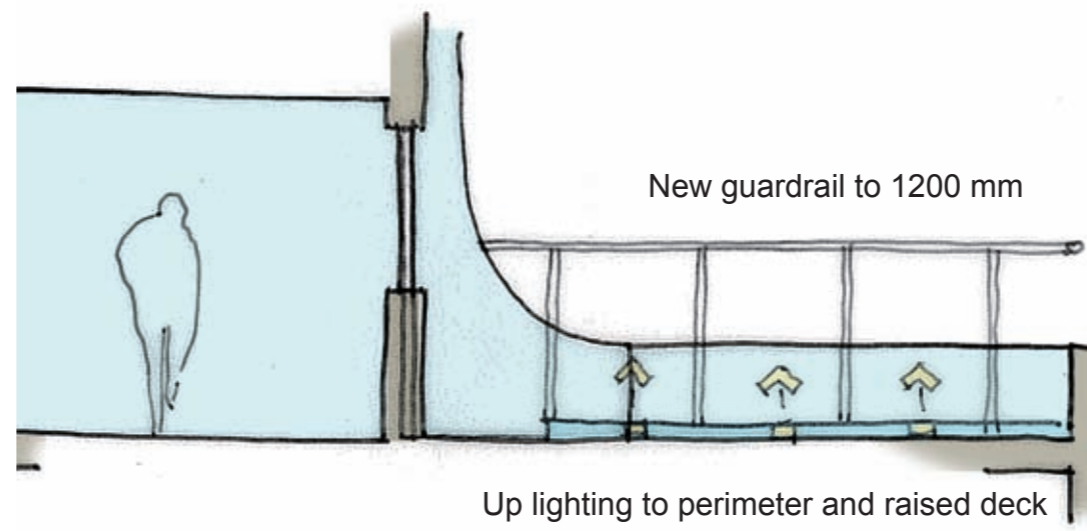
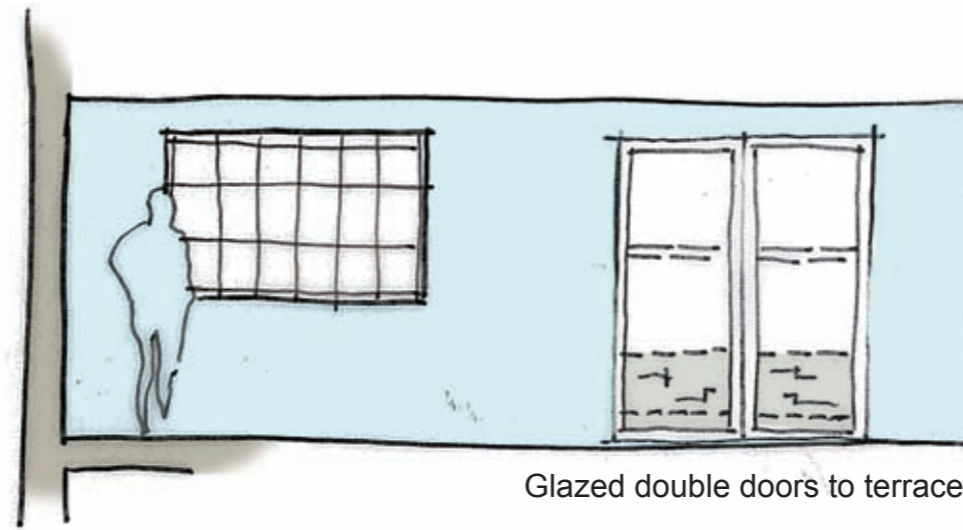
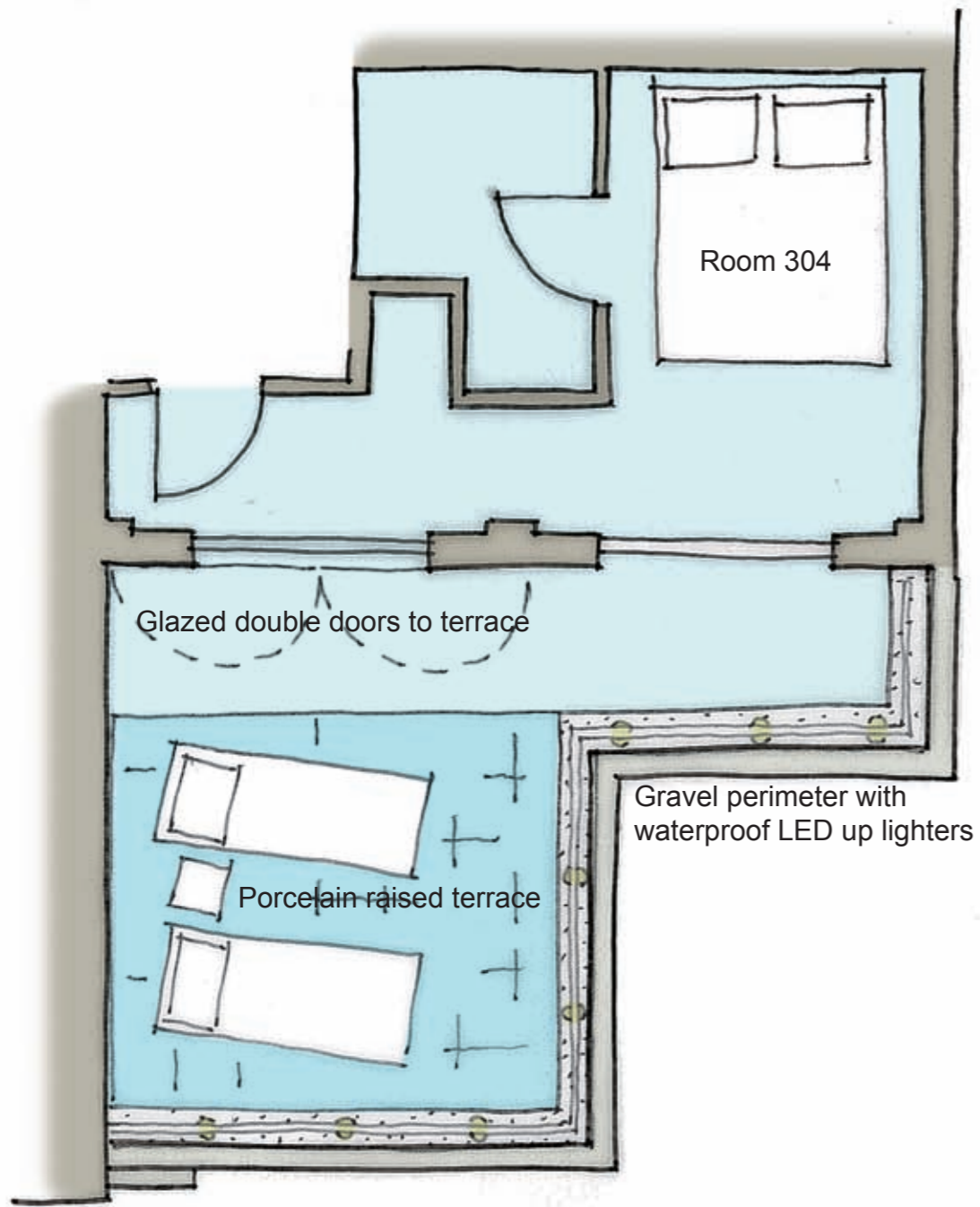


Nice secluded position, not overlooked

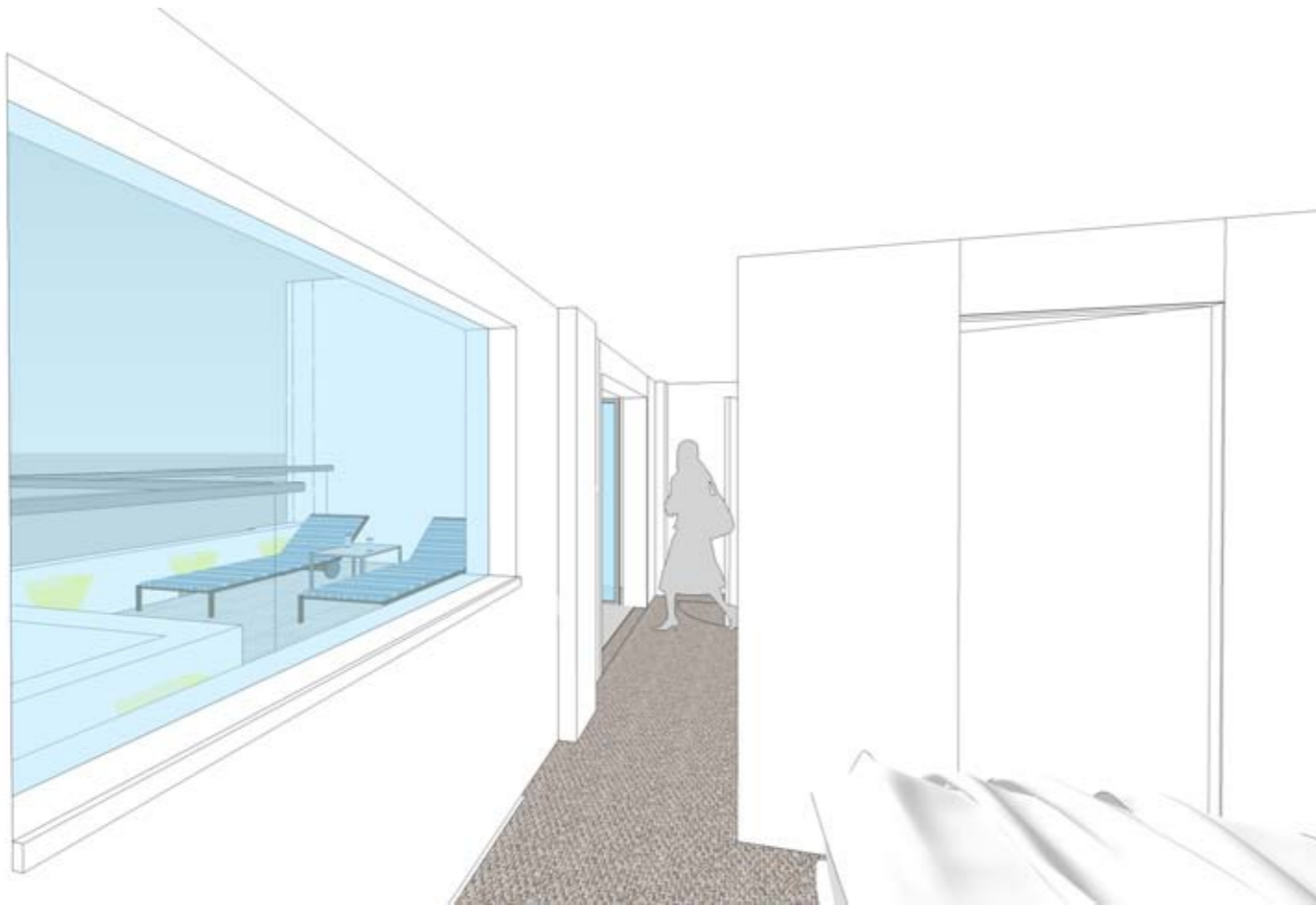


Attractive roof scape from windows

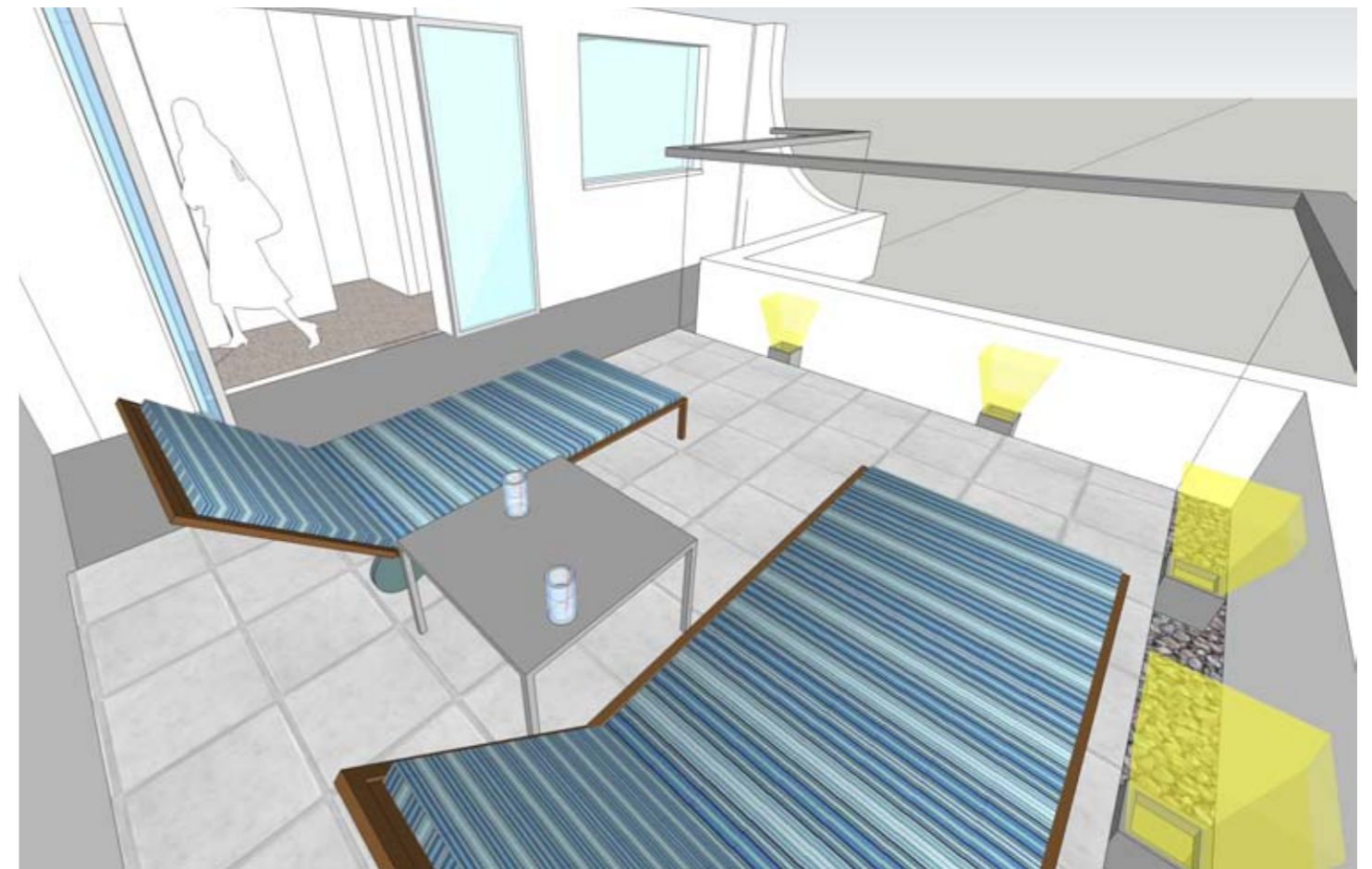
304. Existing room small but refreshed en suite and excellent views of church make it an attractive



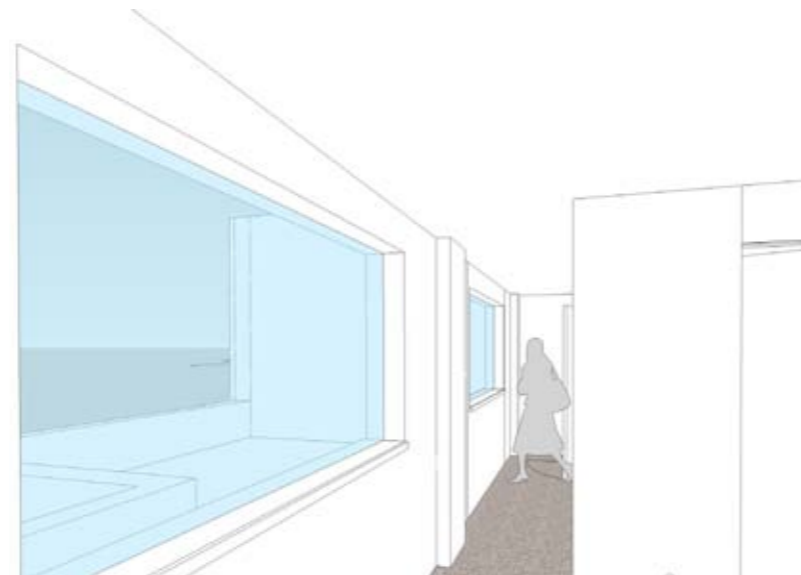
Study of 304. Introducing glazed double doors onto terrace, a raised stone / porcelain deck with perimeter guard rail, gravel / planting and feature LED up lighting



304. Addition of glazed double doors and porcelain raised desk with perimeter luminaires

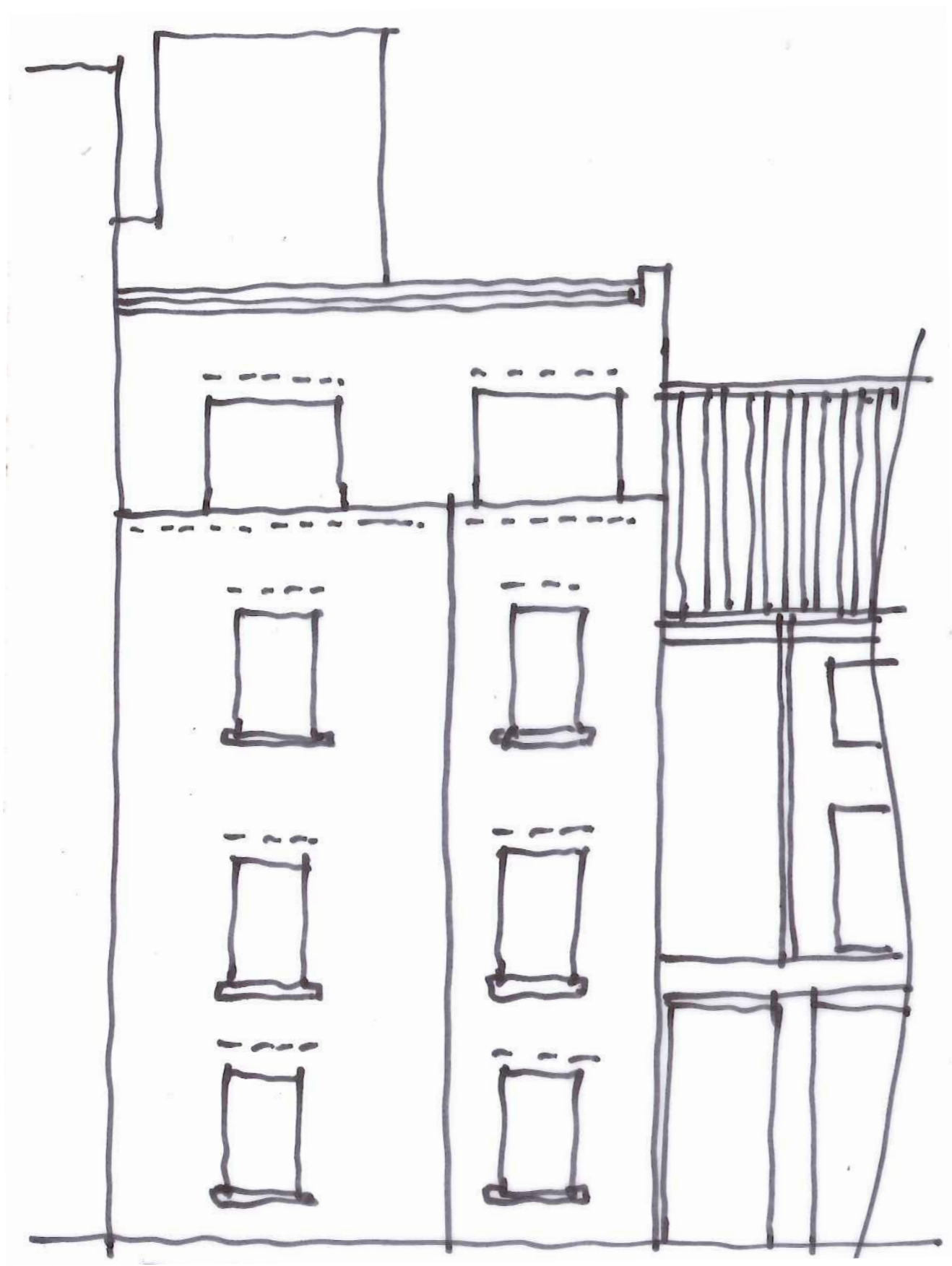


View externally with guard rail sitting to perimeter within gravel bed. Planting could also be incorporated within this zone.

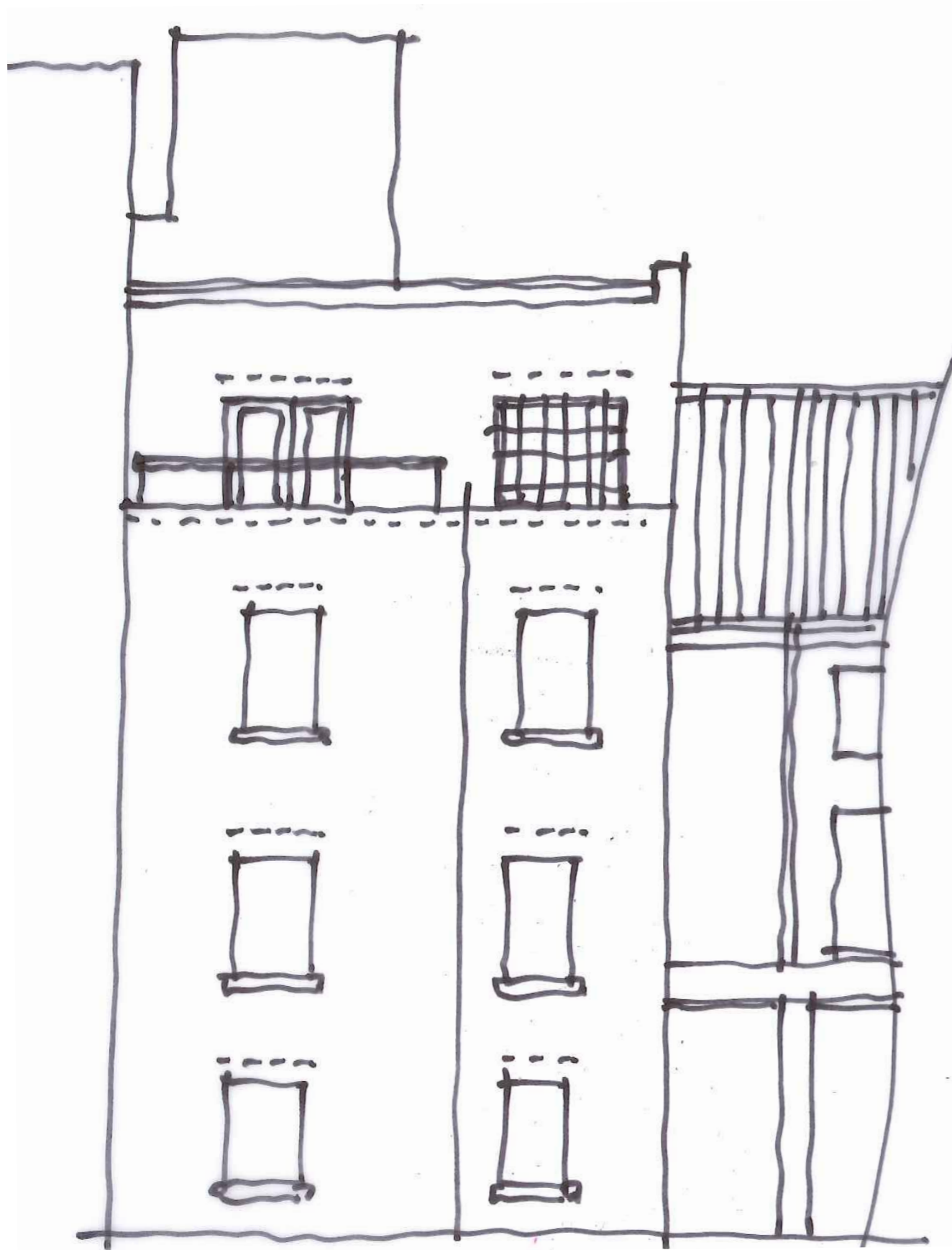


Existing 304

Notes, existing



Room 304 Existing terrace



Room 304 Proposed terrace





## Glass Balustrades

Like transparent blades, the upper edges of the glass balustrades slice into the air, blurring contours with their reflections. Horizontal or vertical sheets of plate glass can be used either to enclose a balcony, terrace or staircase. Whether for domestic or commercial use, balustrades bring an unbeatable sense of drama, maximising light and views, allowing places to be saturated in daylight the ultimate feel – good – factor.

The use of glass creates an extraordinary radiance; in brilliant sunshine the effect is spectacular. The glass sheets can be enviably seamless or supported by stainless steel poles.

Balustrades will add a sense of lightness, lack of materiality and a very modern touch either to your home or business.



Listed Building Application Elements (rev a)

Prince Rupert Hotel,  
Butcher Row, Shrewsbury

SY1 1UQ

July 2012

